

WIBUDS ESSENTIALS



Bluetooth® 5.0



16H total playtime



Charging case



Low power consumption



All-access button



Handsfree calls



True wireless



Android & iOS



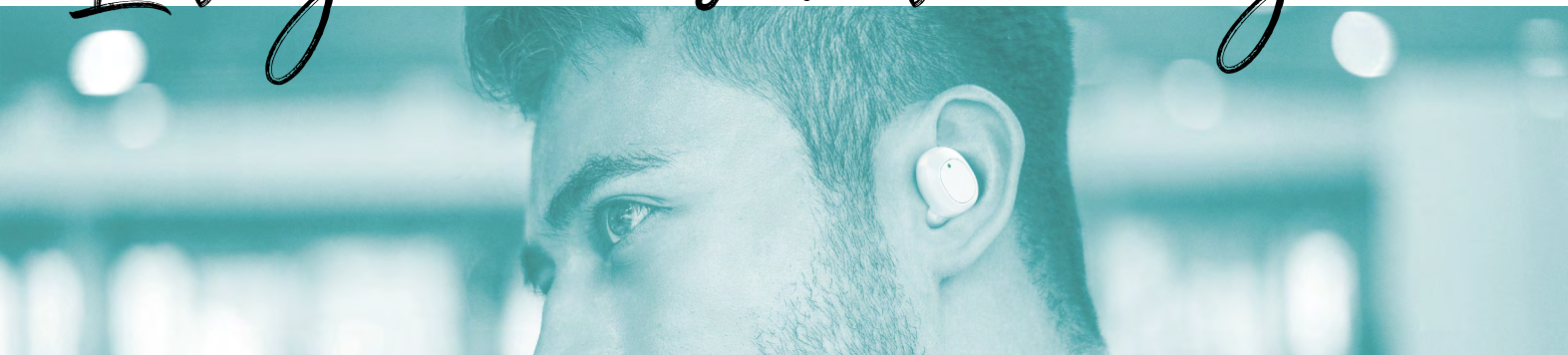
So easy to hop, skip and boogie to the beat!

No fuss and pure, lasting fun are where it's at with these pocketable earbuds. Just a breeze to use, it features an all-access button for all functions. Enjoy lasting quality sound for great value, as these accessible buds bring you 16 hours of total playtime. That's 4 hours of battery autonomy in one full charge, along with 12 additional hours with 3 quick top ups

in the charging case. Look on trend anywhere you go, while in total comfort, with the minimalistic and ergonomic design in modern, matte white. So easy to connect, WiBUDS Essentials are compatible with Android and iOS devices via Bluetooth®.

Colour available: ○ Matte white

Lasting & accessible tunes anywhere



WIBUDS ESSENTIALS

WIRELESS EARBUDS

WIKO



Technical specifications

Connectivity	
Bluetooth® version	5.0
Bluetooth® operating range	10 metres
Power supply	
Earbuds battery type	40 mAh Li-Ion rechargeable
Charging case battery type	300 mAh Li-Ion rechargeable
Battery life of earbuds	Up to 4 hours in a single charge
Total battery life (3x case charging)	Up to 16 hours of playtime
Charging time of earbuds	35 min
Charging time of the case	2 hours for full charge
Power input	5V / 1A
Connector	Micro USB
Earbuds	
Compatibility	Android and iOS devices
Water resistance	IPX4 splash proof
Certifications	CE, ROHS, REACH, Bluetooth®
Colour of earbuds and case	Matte white
What's in the box	2 WiBUDS Essentials earbuds, charging case, user manual & charging cable Micro USB

Logistical information

Designation	WiBUDS Essentials
EAN code	3700738129826
SKU	WKAUEAWHV850
Packaging	Coloured box
Size (L x H x W)	
Earbuds (2pcs)	23 x 17 x 14mm
Charging case	72 x 32 x 44mm
Packaging	TBC
Inner carton (IC)	TBC
Master carton (MC)	TBC
Weight (g)	
Earbuds (2pcs)	9g
Charging case with earbuds	41g
Product & packaging	TBC
IC	TBC
MC	TBC
Packing (nb of single units by)	
IC	10
MC	60